



---

# BROCKLEY ASSEMBLY

**Date: TUESDAY, 16 DECEMBER 2014 at 7.00 pm**  
**Leander Community Centre**  
**Ship Street, SE8 4DH**

**Enquiries to: Maya Onyett**  
**Telephone: 0208 314 8208 (direct line)**

## MEMBERS

<b>Councillor Obajimi Adefiranye</b>	<b>(L)</b>
<b>Councillor John Coughlin</b>	<b>(G)</b>
<b>Councillor Alicia Kennedy</b>	<b>(L)</b>



INVESTOR IN PEOPLE

## ORDER OF BUSINESS – PART 1 AGENDA

Item No		Page No.s
1.	Welcome from the Chair- Cllr Alicia Kennedy	
2.	Neighbourhood Planning presentation- Brian Regan - Planning Policy Manager / David Knight - Planning Officer	
2.1	Brockley Forum Neighbourhood Planning presentation 141104	1 - 18
3.	Keeping Brockley Clean and Green - Sam Kirk - Strategic Waste & Environment Manager / David Brinson- Waste Initiatives & Prevention Officer	
3.1	Recycling_and_Enviro_Presentation_Brockley_2014	19 - 35
5.	Project Updates from previously funded groups <ul style="list-style-type: none"> <li>- Marsha Phoenix Memorial Trust</li> <li>- Dalmain Athletic Girls Football Club</li> <li>- Max Media Arts</li> <li>- Brockley Society Tree Committee</li> </ul>	
6.	Brockley Assembly 14-15 Funding Launch	
7.	Community updates	
8.	Closing remarks <ul style="list-style-type: none"> <li>- <i>Join the Brockley Assembly Coordinating Group</i></li> <li>- Feedback forms</li> <li>- Date and agenda items for next meeting:  <b>Tuesday 17 March 2015, 7pm, Leander Community Centre</b> </li> </ul>	



**Lewisham**



INVESTOR IN PEOPLE

The public are welcome to attend our committee meetings, however occasionally committees may have to consider some business in private. Copies of reports can be made available in additional formats on request.

# Neighbourhood Planning

Brian Regan – Planning Policy Manager  
David Knight – Planning Policy Officer



London Borough of Lewisham Planning Policy Team

# Introduction to the planning system

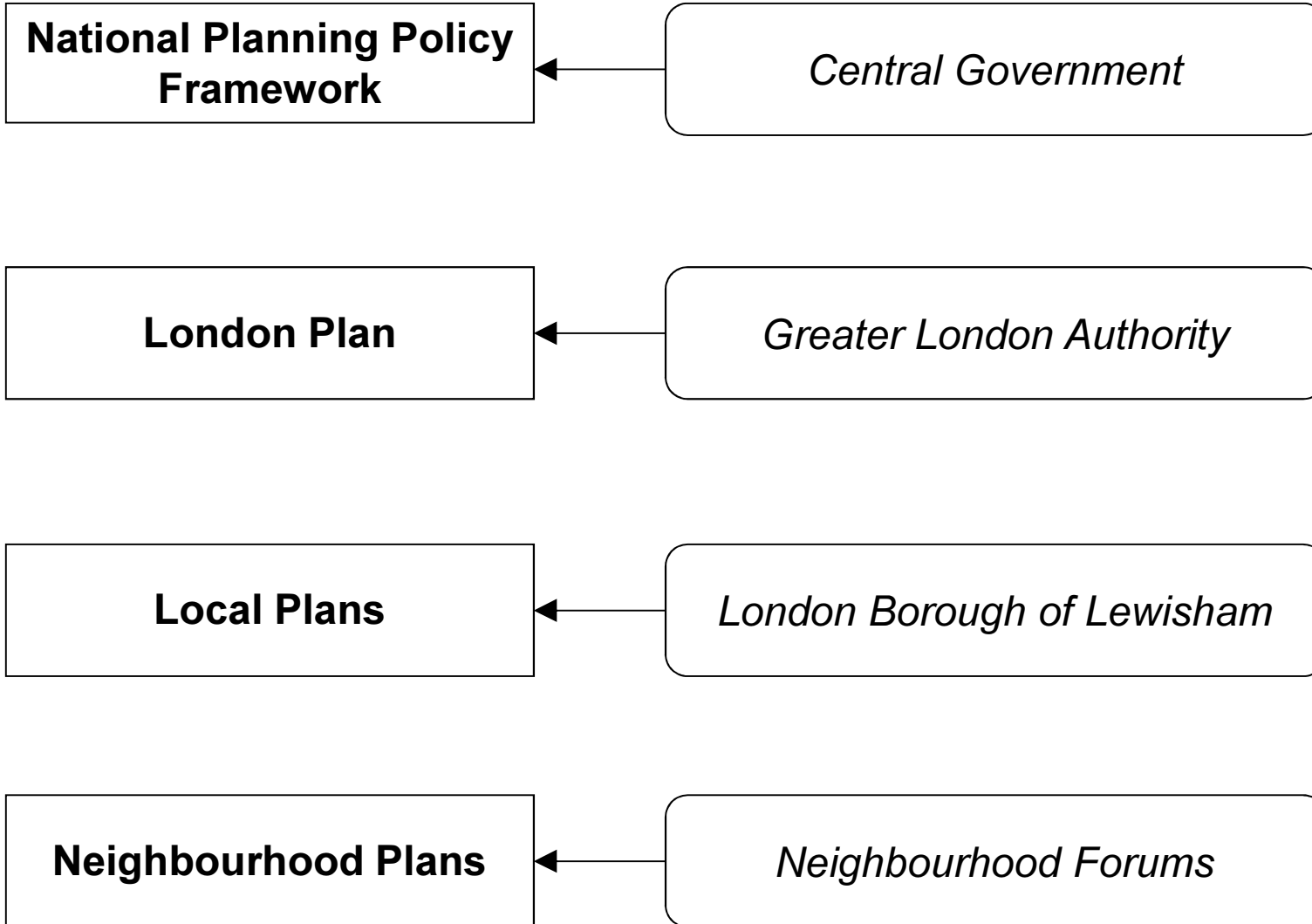
- Planning policy documents are used by planning officers to determine planning applications.
- Planning policy documents are produced at the:
  - National level (Central Government)
  - Regional level (Greater London Authority)
  - Borough level (London Borough of Lewisham).....

# Neighbourhood planning

- Neighbourhood plans: new type planning policy document at the neighbourhood level.
- Neighbourhood plans are produced by local community groups, not the council.
- Neighbourhood plans are entirely optional – the community decides whether to produce one.

Planning Document

Produced by



In order to produce a  
neighbourhood plan.....

# Formal designations (1)

- In order to produce a neighbourhood plan, a community group must:
  - be designated as a **Neighbourhood Forum** by the Council
  - be designated a **Neighbourhood Area** by the Council
- Forum and Area applications must be submitted by community groups to the Council's Planning Policy team.



# Formal designations (2)

- Designations are made by the Mayor, who receives advice from planning officers.

# Neighbourhood Forums (1)

- Neighbourhood plans can only be produced by Neighbourhood Forums.
- Any group can apply to become a neighbourhood forum, but must meet basic criteria:
  - Established with express purpose to improve area,
  - Membership open to residents, workers and local elected members,
  - A minimum of 21 people,
  - Has a written constitution.

# Neighbourhood Forums (2)

- There are further detailed issues that the Council should consider, including whether the members are representative of the local community.

# Neighbourhood Areas (1)

- Neighbourhood plans can only be produced for designated areas.
- Community groups can apply to the Council to designate any area they choose.
- Area designation application can be submitted at same time as forum designation application.

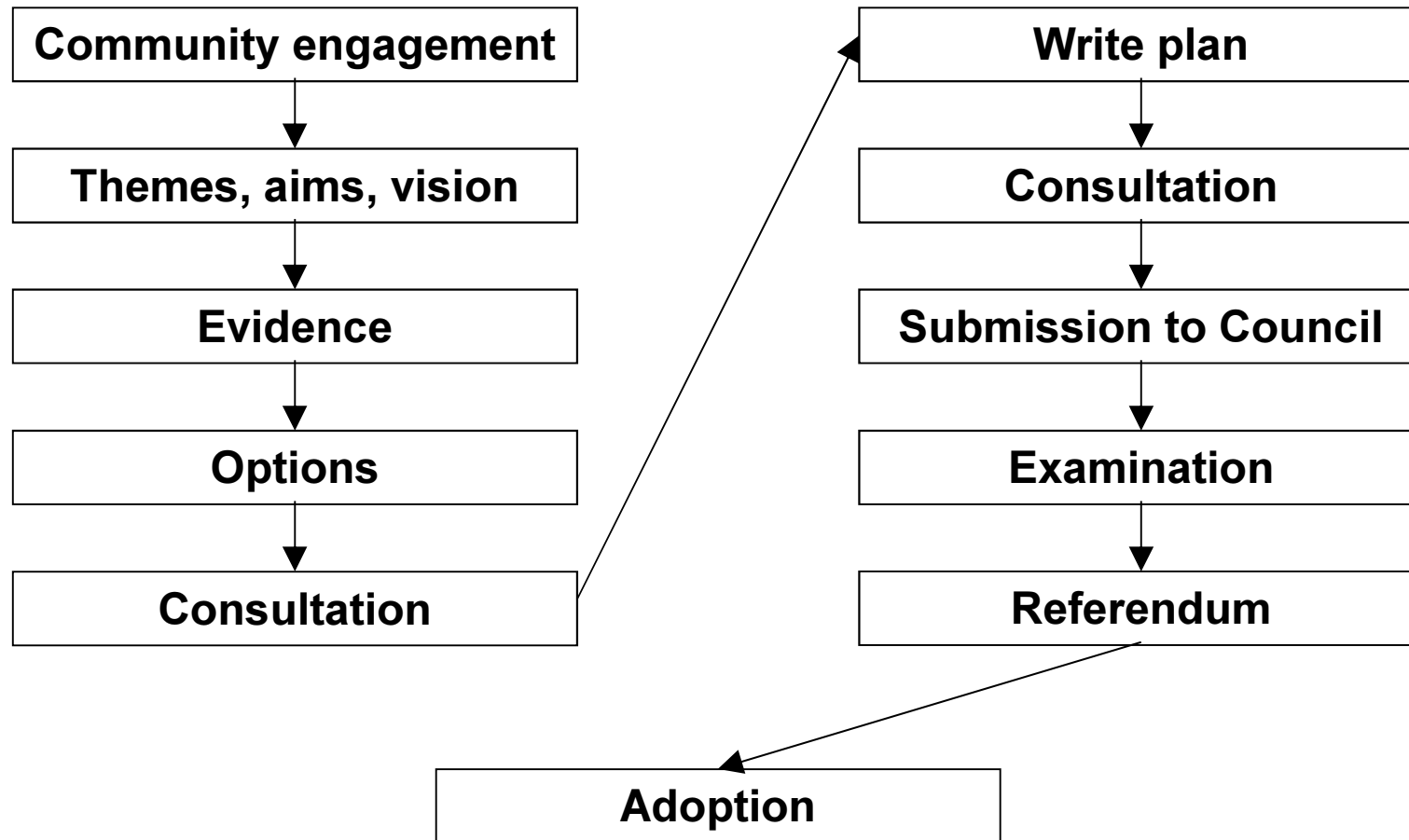
# Neighbourhood Areas (2)

- An area should be based on local people's *“understanding and knowledge of the geography and character of the neighbourhood.”* (National Planning Practice Guidance)
- Not required to follow administrative boundaries, however cross-borough working is likely to take longer.

# Neighbourhood Plan

- Once designated, a forum can produce a neighbourhood plan.
- A neighbourhood plan contains planning policies to influence future developments.
- Estimated minimum production time of 12 months.
- Neighbourhood plans must be independently examined and then be voted for adoption by public referendum.

# Neighbourhood plan-making process (example)



# Community Infrastructure Levy (CIL) (1)

- CIL is money collected from new developments. From Spring 2015.
- No neighbourhood plan in place = 15% of local CIL collected spent within community
- Neighbourhood plan in place = 25% of local CIL collected spent within community



# Community Infrastructure Levy (CIL) (1)

- Money spent by Council, in consultation with community
- Spending can be guided by infrastructure requirements identified in neighbourhood plan

# Status of neighbourhood planning in Lewisham

- **Crofton Park & Honor Oak Park:** designated forum & area.
- **Grove Park:** designated forum & area.
- **Corbett Estate:** submitted forum and area applications to Council.
- **New Cross:** draft application stage.

# Further advice

- Advice notes available on the Council's website: Google "Lewisham neighbourhood plans".
- Detailed guidance and funding information available on the Locality website:  
<http://locality.org.uk/>

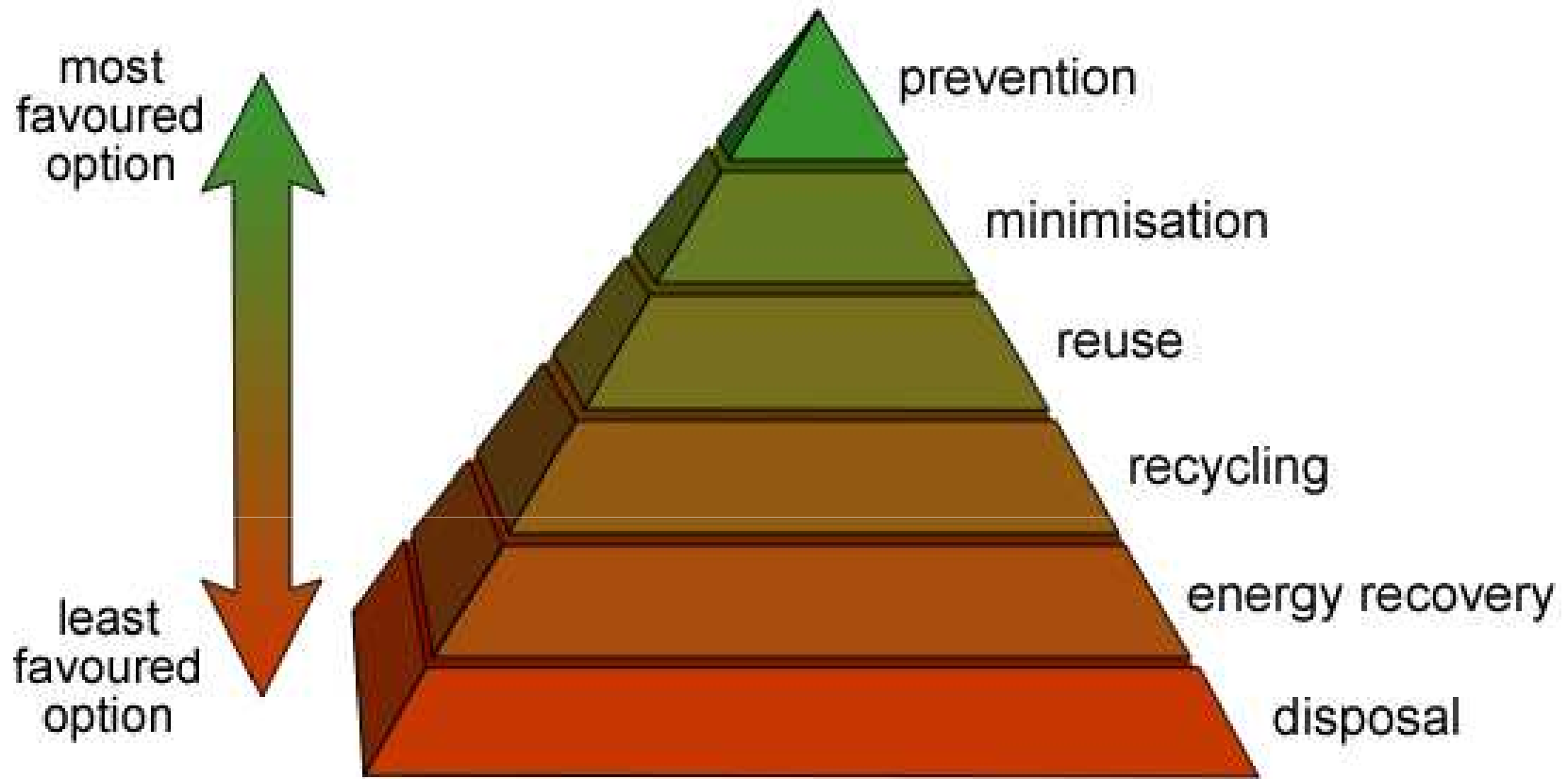
# Contacts

- Contact the planning policy team to discuss further.
- We can meet with prospective neighbourhood forums.
- [planning.policy@lewisham.gov.uk](mailto:planning.policy@lewisham.gov.uk)
- Brian Regan, Planning Policy Manager:  
020 8314 8774
- David Knight, Planning Policy Officer:  
020 8314 7669



# Lewisham's Environment





## The Waste Hierarchy

- **285,500 people live in the Borough.**
- **121,500 properties.**
  - 81,000 street properties
  - 40,500 estate properties
- **Waste collection crews visit over 1,500 properties each per day.**
  - Over 82,000 tonnes of refuse sent for incineration in 2013/14
  - Over 18,000 tonnes of recycling collected in 2013/14
- **Street cleansing is responsible for over 700 miles of roads & 2,500 litter bins – 364 days a year.**
  - 5,776 tonnes of litter
  - 1,317 tonnes of market litter
  - 6,199 tonnes of fly tips reported. 9,152 collected.
  - 60 tonnes of leaves
  - 3,256 number of graffiti jobs cleared
  - 22,455 number of free mattress recycling collections (697 tonnes)
- **Maintain 50 parks, 18 nature reserves & 4 cemeteries**
  - 14 parks have Green Flag status
  - 110 highways enclosures
  - Over 30,000 trees in the borough



- ✓ UK Government and EU directives
- ✓ Recycling makes better use of our decreasing natural resources
- ✓ It makes financial sense

Lewisham Council pays much less to recycle good quality recyclables than to dispose of them.



Why should we recycle?





# recycle for Lewisham



cartons	mixed paper & card	household plastic packaging	household metal packaging	mixed glass bottles & jars

Page 23

## Kerbside



## Estates



## Flats above shops



# What can be recycled?



# Contamination *'The enemy of recycling'*

Wrong materials in the recycling bin

This has caused whole lorries to be rejected

## No Thanks!

Do not put these in the kerbside recycling



No black sacks



No food



No garden waste



No nappies

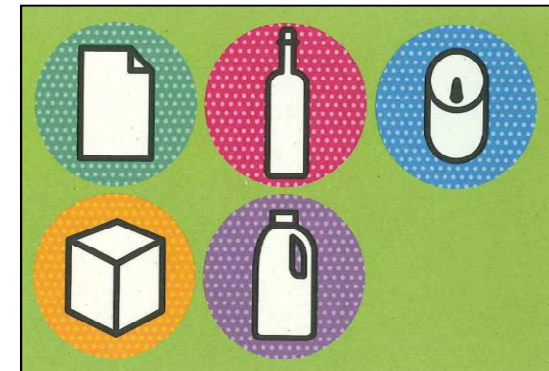
Page 24

## Why has this happened?

Not enough communication

Unclear communications

Different boroughs have different systems



# Hurdles to overcome





What have we found in the recycling bin?



## 2014/15 Year to date environment stats:

- \* 3,901 reported fly-tip jobs collected so far this year.
- \* Average fly-tip clearance time 2.25 day.
- \* 55% of fly-tip jobs collected within 1 day.
- \* 3,080 graffiti jobs booked so far this year.
- \* 100% of graffiti removed within 1 day of being reported on municipal property and within 1 day of permission being granted for removal on private property.

# Brockley Street Surveying Scores

September - November 2014.

Percentage of acceptable scores.

	Brockley Average	LB Lewisham Average
Litter	94%	87%
Detritus	89%	91%
Graffiti	98%	93%
Fly-posting	96%	94%

Page 27

## Dog Fouling in Lewisham

2014/15 to date: 4.57% of places surveyed have dog fouling in them.

10 dog fouling jobs have been reported in Brockley.

**Our streets**



## What we do:

1. Enforcement activity - Dog Control Orders can be issued. Witness statements are key.
2. BARK (Borough Action for Responsible K9's).
3. 'Dog Activity Days' & The Green Dog Walkers Scheme.
4. Awareness raising campaigns. Both local and national such as the Dog Poo Fairy.
5. Detailed information on the website.
6. Training & Education for schools and our partners, via Clean and Green & Junior Citizens.
7. Remove all dog fouling that we are alerted to via Love Lewisham, the call centre and the website.
8. Specialist dog fouling removal machine called 'FIDO'.
9. Pavement Stencils.



# Talking of Dogs...



- Removal:
  - Fly tip removal from public land
  - Private land is the responsibility of landowner
  - 2 crews for streets and 2 for Lewisham Homes (Pinnacle collect on estates in Brockley)
  - 1 mattress crew
- Enforcement:
  - 5 Enforcement Officers (2 do Abandoned Vehicles)
  - Fly tipping (also commercial waste, unlawful street trading, litter, dog control orders)
- Pilot with Phoenix Community Housing
  - Lamp post signs
  - Leaflets requesting help for witnesses



# Fly Tipping & Enforcement



<b>Enforcement Stats</b>	<b>2013/14</b>	<b>2014/15 so far</b>
Prosecutions	6	9
FPNs Issued	152	215
FPNs Paid	24%	70.50%

<b>FPN Breakdown</b>	<b>2013/14</b>	<b>2014/15 so far</b>
Waste Duty of Care	31	124
Fly-Tipping/ Littering	33	47
Unlawful Street Trading	54	26

## Enforcement Stats





# Report any environmental issue by using Love Lewisham.

Love Lewisham can be downloaded for free on your Smart Phone.

If you do not have a smart phone just visit the Lewisham website to report environment issues.

You can report the following:

- Fly tipping
- Graffiti
- Dog fouling
- Detritus
- Fly posting
- Abandoned vehicles
- & More

First Local Authority in UK to offer free mattress recycling to residents (More than 13,000 so far this year = 419 tonnes)



- \* We deliver Clean & Green schools to 25 primary schools in the borough every year. This year we have 5 from Brockley.
  - Stillness Infants, Turnham, Myatt Garden, John Stainer & Beecroft.
  
- \* We work with multiple partners to deliver Junior Citizens to over a thousand Year 6 children every year.
  
- \* We deliver info letters regarding dog fouling, bins on streets and fly-tipping to problem streets.
  
- \* We use the internet, social media, community, newsletters, magazines and newspapers to try and promote our services.
  
- \* We run river clean ups, community clean ups, get community payback to help street cleansing services.

**Awareness Raising is key**



The last resident satisfaction survey was carried out in 2012

<b>Environment</b>	<b>Satisfaction</b>
Parks	89%
Reuse & Recycling Centre	81%
Refuse collection	87%
Recycling	83%
Street Cleansing	75%

- Tell your neighbours and friends what we've told you.
- Reduce, Reuse & Recycle as much as you can.
- Use the RRC / Bulky Waste Service.
- Report environmental issues.
- Provide witness statements.
- Community Clean Ups through Capital Clean Up.
- Sign up to Green Dog Walkers.
- Give us your opinion.



**What can you do to help us?**

# Questions?

For further information you can:

**Call:** 0208 314 7171

**Visit:** [www.lewisham.gov.uk/recycling](http://www.lewisham.gov.uk/recycling)  
[www.recycleforlewisham.com](http://www.recycleforlewisham.com)

**Follow us:** [www.twitter.com/EnviroLewisham](https://www.twitter.com/EnviroLewisham)